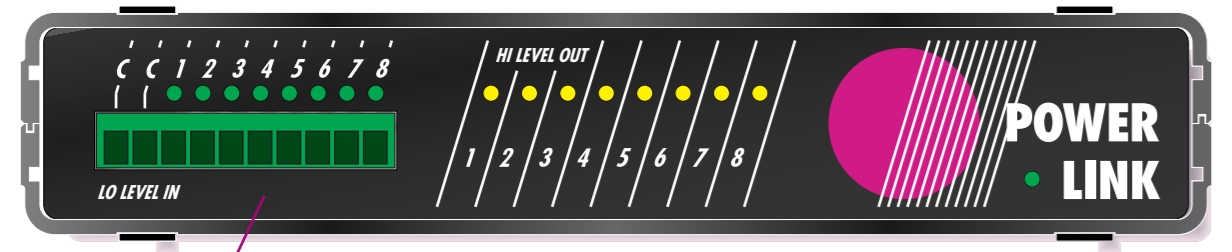


POWERLINK

Art. No. 3497

POWERLINK features eight independent relay outputs and eight independent inputs. Use it as part of your Dataton system to switch electrical devices, like lamps or motors, or to connect external switches such as custom-made keypads, etc.



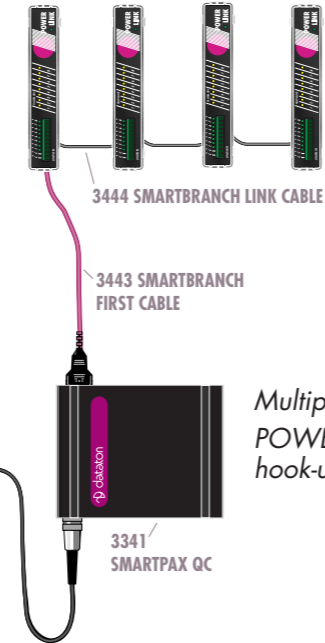
POWERLINK front panel view. Green LED indicators show input level status. Yellow LED indicators show power relay status (accessed from the rear panel, more info on page 4).

POWERLINK has a power handling capacity of 10A, 230V AC. Four units may be daisy-chained to a single SMARTPAX port, making POWERLINK an effective and economical resource for relay control. Detachable screw terminals and two connection cables for daisy-chaining are shipped with each POWERLINK unit.

USAGE

POWERLINK is used with the SMARTPAX QC control unit in the Dataton system.

To connect POWERLINK to a SMARTPAX QC, use the enclosed cable, 3443 SMARTBRANCH FIRST CABLE. The snaplock connector plugs into a SMARTPAX QC port. The modular connector goes to the IN port on the POWERLINK.



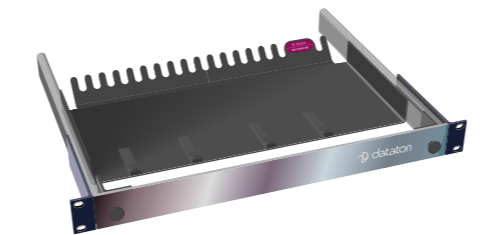
Multiple POWERLINK hook-up

You may mix POWERLINK and KEYLINK units on the same SMARTPAX port. The remaining ports may be used to control more POWERLINK or KEYLINK units, or unrelated media devices as required.

Please note: You may connect a maximum of eight POWERLINK units to a single SMARTPAX QC. This is due to power supply constraints; operating power for POWERLINK is entirely supplied by SMARTPAX QC. If your installation calls for more than eight POWERLINK units, distribute them on more than one SMARTPAX QC unit, in order to ensure reliable operation.

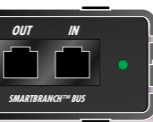
INSTALLATION HINTS

POWERLINK units may be rack mounted by means of 3450 ONE U RACK BAY. This is usually the most suitable way to mount units in fixed installations.



CONNECT MORE UNITS

To connect additional POWERLINK units on the same SMARTPAX QC port, use the enclosed black cable, 3444 SMARTBRANCH LINK CABLE.



This modular/modular cable goes from the OUT port of the first POWERLINK, to the

IN connector on the second unit. In this way, you can run up to four POWERLINK units from the same port. The green LED adjacent to the IN connector indicates that the upstream data connection is functioning. When this LED flickers, it is an indication of normal data transmission between units.

PROGRAMMING

POWERLINK functions are accessed and programmed from Dataton TRAX control software, version 3.6.1 or later, available free of charge from Dataton's web-site: www.dataton.com

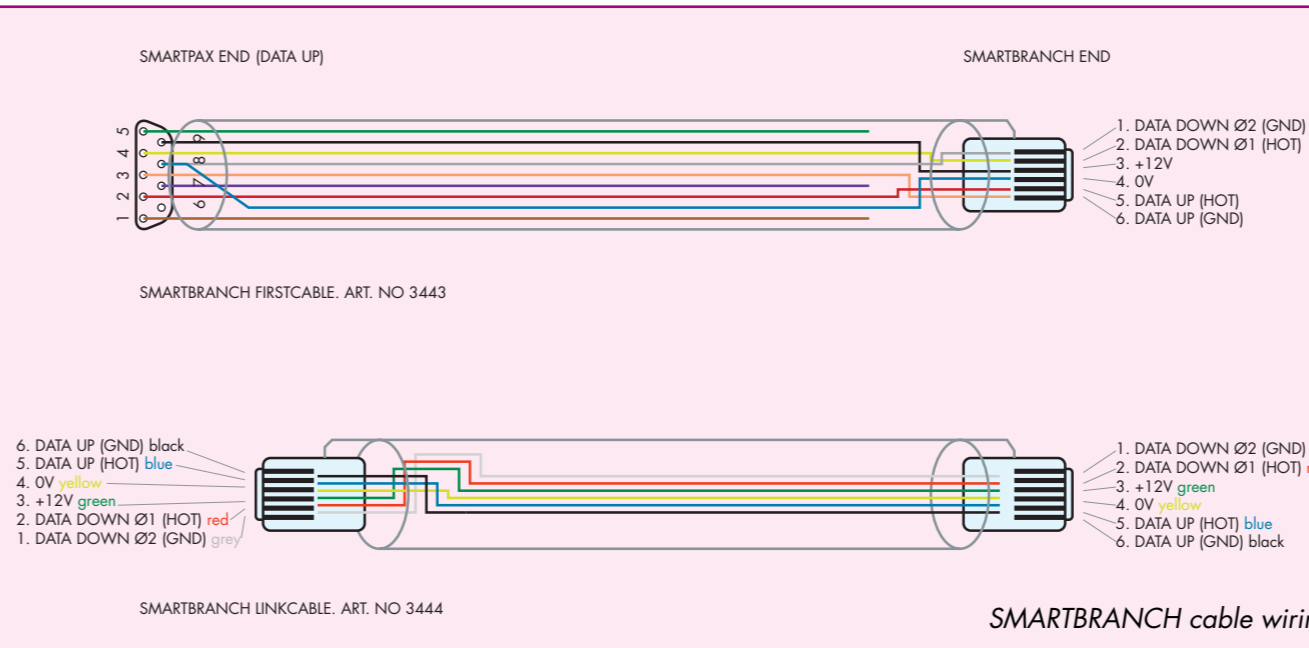
To program POWERLINK, create a Switch device in TRAX and select Dataton POWERLINK on the Type pop-up menu.

Specify a port and a subaddress corresponding to the output/input number on the unit. Set the Function to input, output or both as appropriate.

If you are running multiple POWERLINK units on the same SMARTPAX QC port, use subsequent subaddresses for the additional inputs and outputs, eg, use

subaddress 9 for the first input/output on the second POWERLINK, and so on. To program the outputs, use a Trigger cue set to On, Off, Pulse or Toggle and assigned to the switch device(s) to be controlled.

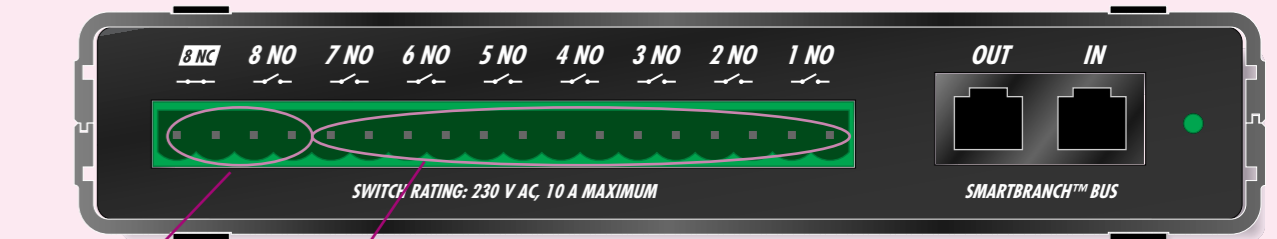
For full details, please refer to the information database inside Dataton TRAX.



Technical Description

POWERLINK has eight independent relay outputs and eight independent low level digital inputs. Separate, detachable screw terminals for inputs and outputs. Up to four units can be daisy-chained on one SMARTPAX port. POWERLINK and KEYLINK units can be freely mixed on the same port.

Warning: Installation of POWERLINK in line voltage applications, ie, switching on and off line operating functions, must always be carried out by an authorized electrician.



Relay switch no 8 is double pole, one normally open, one normally closed, eg, for SPDT applications.

Relay switches nos 1-7 are single pole, normally open type.

Technical Specifications

Relay power handling capacity: 10A, 250V AC, 30V DC maximum. 10 mA, 5V DC minimum.

Power relays are accessed from the rear panel. Connections are carried out by means of the jackable screw terminal included.

Arc suppression: Relay switches have integrated arc arresstor circuits limiting relay voltage due to inductive kickbacks to 425V @ 500V/s and to 800V @ 100V/µs).

Safety specifications: In accordance with LVD 73/23/EEC as amended by 93/68/EEC.

Logic input characteristic: Solid state (DC only), with built-in 3.3kΩ pull-up to +12V internal supply. Connect input pin to common ground pin to activate the input. All inputs and outputs have LED indicators on the front panel.

Logic inputs are accessed from the front panel and connections are carried out by means of the low-voltage screw terminal included. Common terminals are labeled "C".

Software compability: Use with Dataton TRAX, version 3.6.1 or later, and Dataton SMARTPAX QC.

POWERLINK, article number 3497
Size: 157×125×30mm (6.2"×4.9"×1.2"). Weight: 400 g
Shipped with cables 3443 and 3444