

*Instruction Book For  
Tensioned Director Electrol*



*The*  
**POWER** *In*  
**PRESENTATION PRODUCTS**



**DA-LITE SCREEN COMPANY, INC.**

3100 North Detroit Street  
Post Office Box 137  
Warsaw, Indiana 46581-0137  
Phone: 219/267-8101  
800-622-3737  
Fax: 219/267-7804  
[http:// www.da-lite.com](http://www.da-lite.com)  
e-mail: [info@da-lite.com](mailto:info@da-lite.com)

## IMPORTANT SAFETY INSTRUCTIONS

When using your video equipment, basic safety precautions should always be followed, including the following:

1. Read and understand all instructions before using.
2. Position the cord so that it will not be tripped over, pulled, or contact hot surfaces.
3. If an extension cord is necessary, a cord with a current rating at least equal to that of the appliance should be used. Cords rated for less amperage than the appliance may overheat.
4. To reduce the risk of electric shock, do not disassemble this appliance. Contact an authorized service dealer when repair work is required. Incorrect reassembly can cause electric shock when the appliance is used subsequently.
5. The use of an accessory attachment not recommended by the manufacturer may cause a risk of fire, electric shock, or injury to persons.

## SAVE THESE INSTRUCTIONS

### PRE-INSTALLATION

1. Carefully unpack screen and remove outer wrapping from case.
2. Make sure to recheck measurements of screen location before installation.

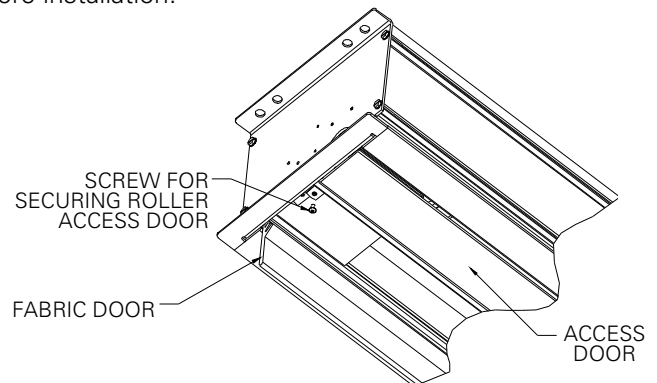


FIGURE 1

### INSTALLATION

1. Install screen by raising unit into position between joists at one end only. Install lag screws in mounting bracket or hang from 3/8" rods.
2. Level unit lengthwise with a carpenter's level and plumb level. Secure opposite end.

**CAUTION!** Do not secure access door or seal in until screen has been secured in position and properly tested for satisfactory operation.

3. Remove screw at each end of roller access door (Fig. 1).
4. Remove junction box cover plate.
5. Install electric hook up that applies to your unit. Make sure to review your electrical installation checklist and wiring diagram (included) for either 120 volt switch, 220/240 volt switch, or DRC low voltage control.

**NOTE:** Screen has been internally wired at Da-Lite. Wiring designated "external" is completed by installer conforming to local and national codes.

**CAUTION!** DO NOT CUT TAPE ON FABRIC WITH A KNIFE OR ANY SHARP TOOL. REMOVE BY HAND.

- Carefully remove shipping brackets by removing the hex head screws from aluminum slat and case. Slat should move freely (Fig. 2).

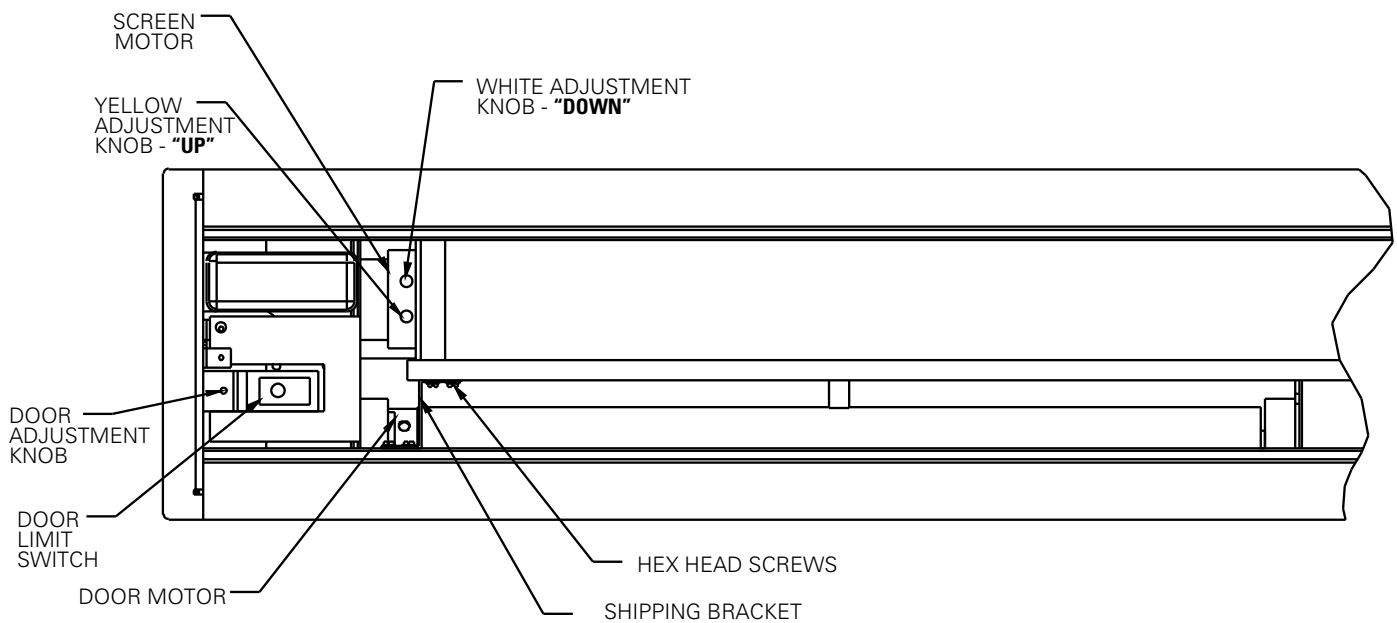
**CAUTION!** Remove shipping brackets before operating screen.

- Test installation by carefully running picture surface up and down several times. Be prepared to stop screen.

**NOTE:** When rolled down, the picture surface should wrap fully around the roller. No part of the roller should be exposed. Picture surface will automatically stop in the down position.

- Run the picture surface upward. The surface door will automatically close when the picture surface rolls into the case. A second motor pulls the door closed. When the door closes, a limit switch is tripped and the motor shuts off.
- Check for satisfactory condition by operating screen a few times.

**CAUTION!** Excessive continuous operation may cause overheating. If this happens, the motor will shut off until it cools to normal operating temperature.



**FIGURE 2**

## **ACCESS DOOR INSTALLATION**

- Run picture surface downward until picture surface door fully opens.
- Install junction box cover plate.
- Close access door.
- Install screws at each end of access door.

## **SCREEN ADJUSTMENT**

Surface travel is stopped automatically in the fully opened and closed positions by limit switches that are properly adjusted at Da-Lite. Should it be necessary to adjust for more or less drop of picture, proceed in the following manner:

**NOTE:** Use a screw driver or Allen wrench to make adjustments.

## **MORE SCREEN DROP**

1. Place operating switch in **“down”** position.
2. When the screen stops, turn the white **“down”** limit knob (Fig. 2) one-quarter turn counterclockwise. Test by raising picture surface approximately two feet, then lower again. Repeat until desired picture surface position is attained.

**NOTE: Must leave 1-1/2 wraps of fabric on roller.**

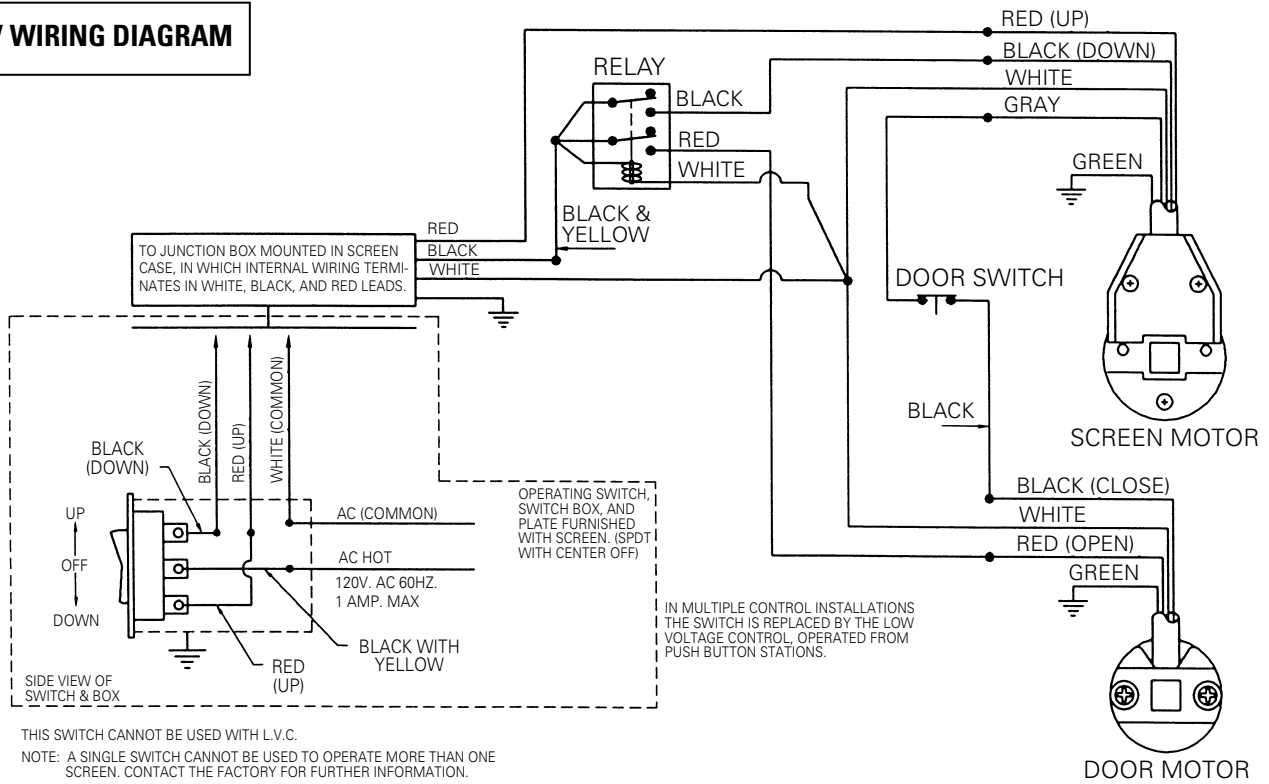
## **LESS SCREEN DROP**

1. Raise picture surface approximately two feet above desired level.
2. Place operating switch in **“off”** position.
3. Turn the white **“down”** limit switch (Fig. 2) one-quarter turn clockwise. Test by raising picture surface approximately two feet, then lower again. Repeat until desired picture surface position is attained.

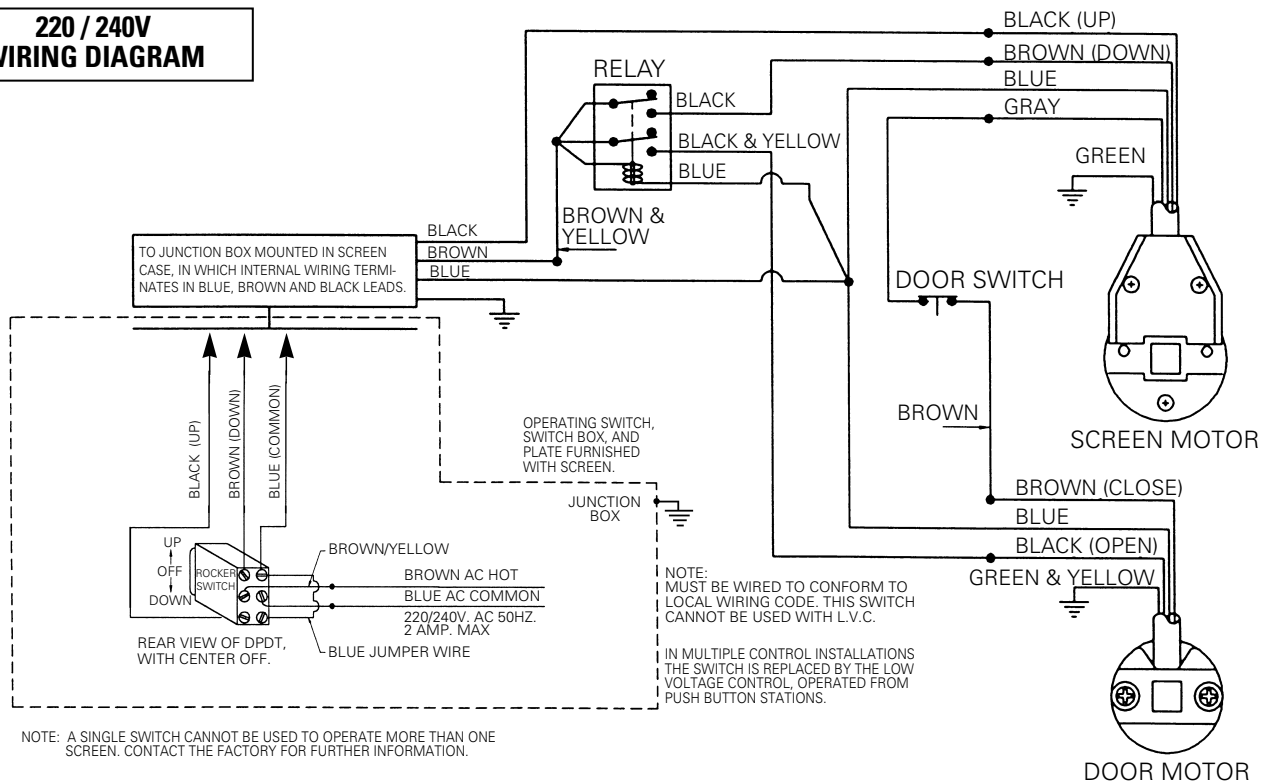
If the surface door does not close flush with the roller access door, it may become necessary to adjust the door limit switch (Fig. 2). Turn the adjusting knob counterclockwise in increments of one-quarter turn until the surface door is flush with the roller access door.

# TENSIONED DIRECTOR ELECTROL INSTRUCTIONS

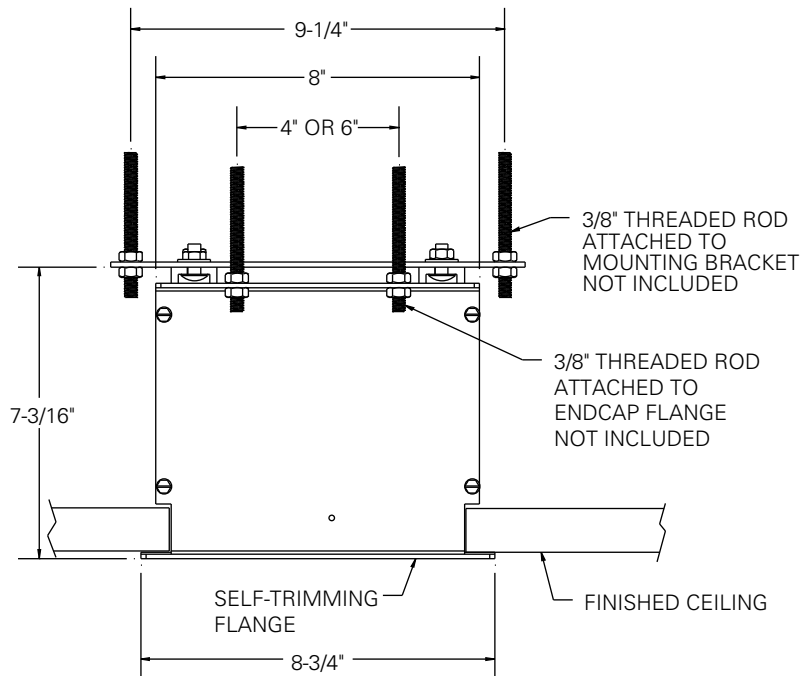
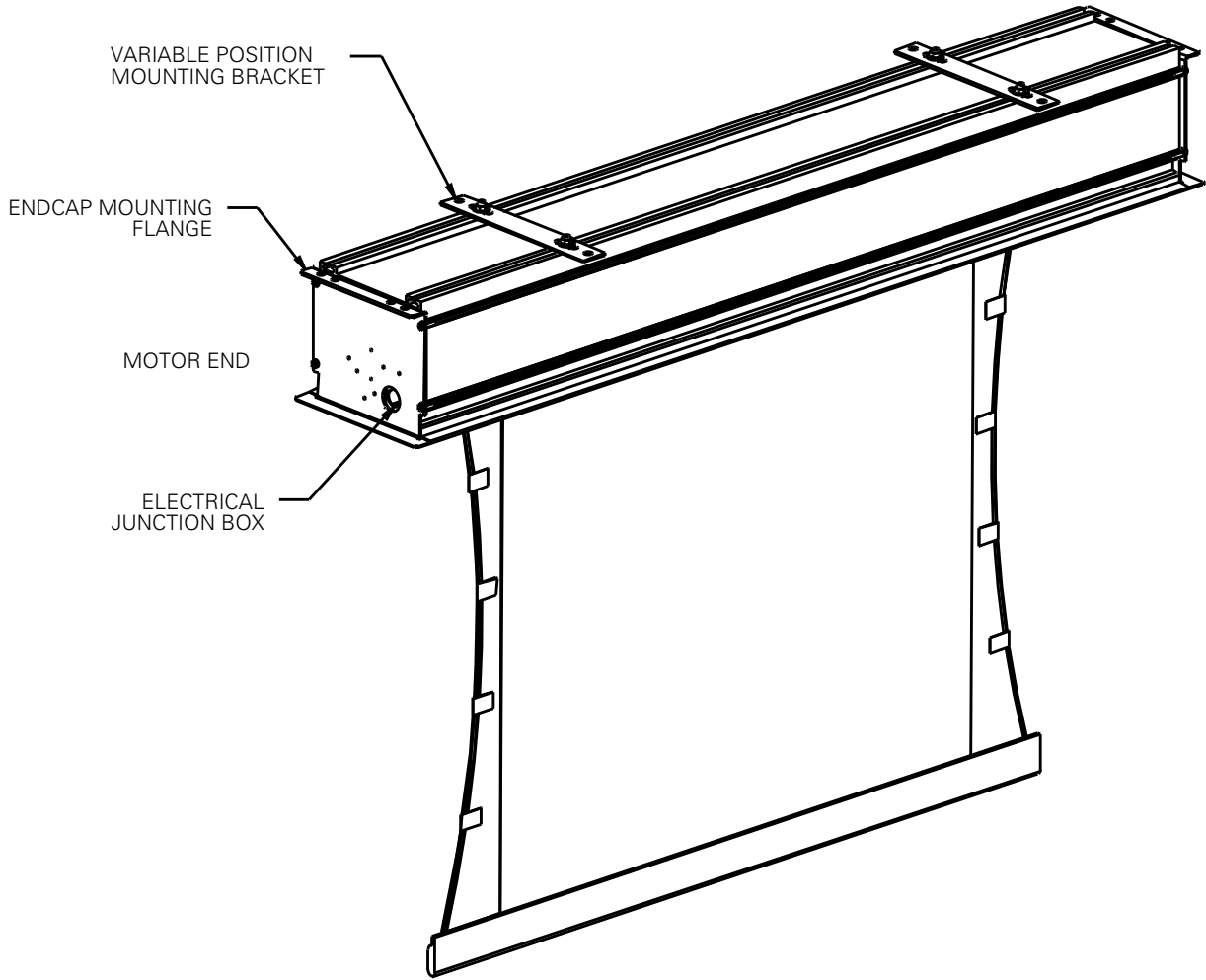
## 120V WIRING DIAGRAM



## 220 / 240V WIRING DIAGRAM



# TENSIONED DIRECTOR ELECTROL INSTALLATION



## TROUBLESHOOTING

SYMPTOM	CAUSE	SOLUTION
<p>1. Screen will not operate or will not go "down". Motor does <b>not</b> hum.</p> <p>Motor <b>hums</b>.</p>	<p>(a) Blown facility fuse.</p> <p>(b) Tripped facility circuit breaker.</p> <p>(c) <b>No power</b> to operating switch or junction box.</p> <p><b>Power at junction box.</b></p> <p>(d) Thermal overload tripped.</p> <p>(e) Broken wire in the "down" position.</p> <p>(f) Defective motor, limit switch or capacitor.</p> <p>(g) Temporary binding.</p> <p>(h) Capacitor burned out.</p>	<p>(a) Replace facility fuse.</p> <p>(b) Reset facility circuit breaker.</p> <p>(c) Check above. Tighten all loose wire connections. Recheck wiring. See installation instructions.</p> <p><b>"Down" Position</b> Check for power across black and white leads.</p> <p>(d) Let motor cool down for 15 minutes. Try again.</p> <p>(e) Check for continuity.</p> <p>(f) Replace motor assembly. <b>NOTE: Motor is a sealed assembly.</b></p> <p>(g) With power "off", turn roller by hand to free binding.</p> <p>(h) Replace motor assembly.</p>
<p>2. Screen will not move upward. Motor does <b>not</b> hum.</p> <p>Motor <b>hums</b>.</p>	<p>(a) Blown facility fuse.</p> <p>(b) Tripped facility circuit breaker.</p> <p>(c) <b>No power</b> at operating switch or junction box.</p> <p>(d) Open door limit switch.</p> <p><b>Power at junction box</b></p> <p>(e) Thermal overload tripped.</p> <p>(f) Broken wire in the "up" position.</p> <p>(g) Defective motor, limit switch or capacitor.</p> <p>(h) Temporary binding.</p> <p>(i) Capacitor burned out.</p>	<p>(a) Replace facility fuse.</p> <p>(b) Reset facility circuit breaker.</p> <p>(c) Check above. Tighten all loose wire connections. See above.</p> <p><b>"Up" Position</b> Check for power across red and white leads.</p> <p>(d) Replace switch.</p> <p>(e) Let motor cool down for 15 minutes. Try again.</p> <p>(f) Check for continuity.</p> <p>(g) Replace motor assembly. <b>NOTE: Motor is a sealed assembly.</b></p> <p>(h) With power "off", turn roller by hand to free binding.</p> <p>(i) Replace motor assembly.</p>
<p>3. Door will <b>not</b> open.</p>	<p>(a) Hinge is bound or has a foreign substance on it which does not allow it to open by gravity.</p>	<p>(a) Check installation to free door. Clear any foreign substance; i.e., paint or plaster from hinge.</p>

## TROUBLESHOOTING

SYMPTOM	CAUSE	SOLUTION
4. Door does <b>not</b> close.  Door does <b>not</b> close tightly.	(a) Open door limit switch.  (b) Door limit switch is not adjusted properly.	(a) Replace switch.  (b) Turn adjustment knob counterclockwise. Do not over adjust and stall the motor.
5. <b>"Down"</b> limit switch incorrect.	(a) <b>"Down"</b> limit switch out of adjustment.	(a) See installation instructions.
6. Noise. <b>NOTE: Screen will operate with a low-pitched hum.</b>	(a) Squeaking, rubber end plug rubbing on motor.  (b) Grinding. Foreign object in screen rubbing on roller or fabric.  (c) Gear noise.	(a) Center roller in case.  (b) Remove foreign object.  (c) Replace motor assembly.
7. Coasting.	(a) Defective brake.	(a) Replace motor assembly.
8. Roller displaced from mounting bracket.	(a) Pin end slipped out of nylon bearing.	(a) Remove pin end mounting. Realign motor in tube. Reattach pin end.
9. Fabric hangs crooked.	(a) Screen not installed properly.  (b) Fabric has backed up inside case.  (c) Fabric is damaged.	(a) Check for level and plumb.  (b) Adjust <b>"down"</b> limit switch slowly until roller is exposed and wrinkle comes out, then readjust for proper drop.  (c) Replace fabric.

### LIMITED ONE YEAR WARRANTY ON DA-LITE PROJECTION SCREENS

Da-Lite Screen Company, Inc. warrants its screens to the original purchaser only, to be free from defects in materials and workmanship for a period of one (1) year from the date of purchase by the original purchaser provided they are properly operated according to Da-Lite's instructions and are not damaged due to improper handling or treatment after shipment from the factory.

This warranty does not apply to equipment showing evidence of misuse, abuse, or accidental damage, or which has been tampered with or repaired by person other than authorized Da-Lite personnel.

Da-Lite's sole obligation under this warranty shall be to repair or to replace (at Da-Lite's option) the defective part of the merchandise. Returns for service should be made to your Da-Lite dealer. If it is necessary for the dealer to return the screen or part to Da-Lite, transportation expenses to and from Da-Lite are payable by the purchaser and Da-Lite is not responsible for damage in shipment. To protect yourself against damage or loss in transit, insure the product and prepay all transportation expenses.

THIS WARRANTY IS IN LIEU OF ALL OTHER WARRANTIES, EXPRESS OR IMPLIED, INCLUDING WARRANTIES AS TO FITNESS FOR USE AND MERCHANTABILITY. Any implied warranties of fitness for use, or merchantability, that may be mandated by statute or rule of law are limited to the one (1) year warranty period. This warranty gives you specific legal rights, and you may also have other rights which vary from state-to-state. NO LIABILITY IS ASSUMED FOR EXPENSES OR DAMAGES RESULTING FROM INTERRUPTION IN OPERATION OF EQUIPMENT, OR FOR INCIDENTAL, DIRECT, OR CONSEQUENTIAL DAMAGES OF ANY NATURE.

In the event that there is a defect in materials or workmanship of a Da-Lite Screen, you may contact our Customer Service Department at P.O. Box 137, Warsaw, Indiana 46581-0137 (219/267-8101) Toll Free (800/622-3737).

**IMPORTANT:** THIS WARRANTY SHALL NOT BE VALID AND DA-LITE SHALL NOT BE BOUND BY THIS WARRANTY IF THE PRODUCT IS NOT OPERATED IN ACCORDANCE WITH DA-LITE'S WRITTEN INSTRUCTIONS.

Keep your sales receipt to prove the date of purchase and your original ownership.