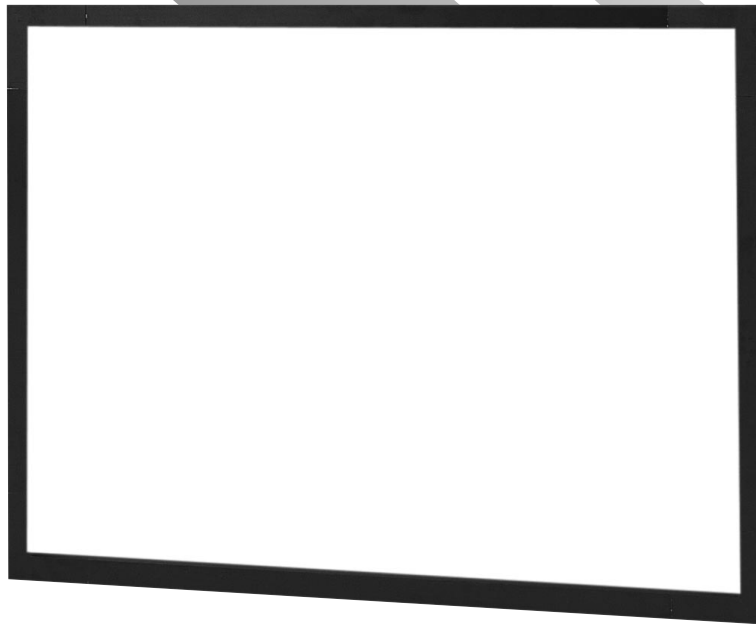




DA-SNAP SCREEN



INSTRUCTION GUIDE FOR DA-SNAP SCREEN

DA-LITE SCREEN COMPANY, INC.

3100 North Detroit Street
Post Office Box 137
Warsaw, Indiana 46581-0137
Phone: 219/267-8101
800-622-3737
Fax: 219/267-7804
[http:// www.da-lite.com](http://www.da-lite.com)
e-mail: info@da-lite.com

ALL MODELS

1. Unpack the frame parts from the carton. DO NOT unroll the screen surface at this time.
2. Assemble the corners to the top and bottom frame members using #10 black screws. Take care to observe the color code on the parts. Assemble the remaining side frame members on the left and right sides using the #10 black screws. See figure 1.
NOTE: Do not attach the screen surface at this time.
3. The brackets are mounted differently for front and rear projection.

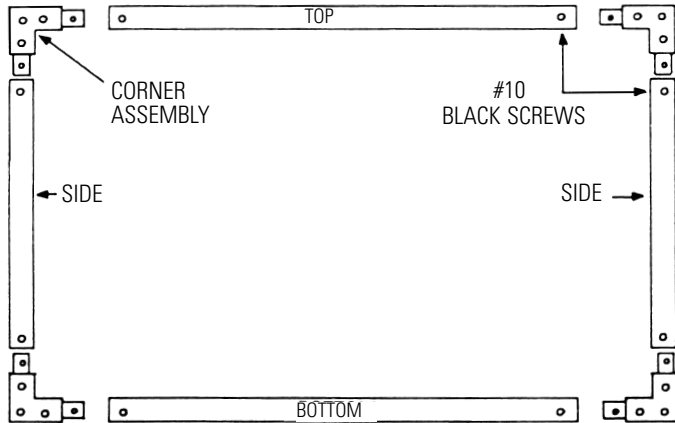


FIGURE 1. REAR VIEW

4. Position the assembled screen frame in the desired location on the wall and in the brackets. Remove the mounting brackets from the screen frame and attach to the wall using the appropriate fasteners based on wall construction. See figure 3. Take care in mounting these brackets as these are critical to proper mounting of the screen frame.

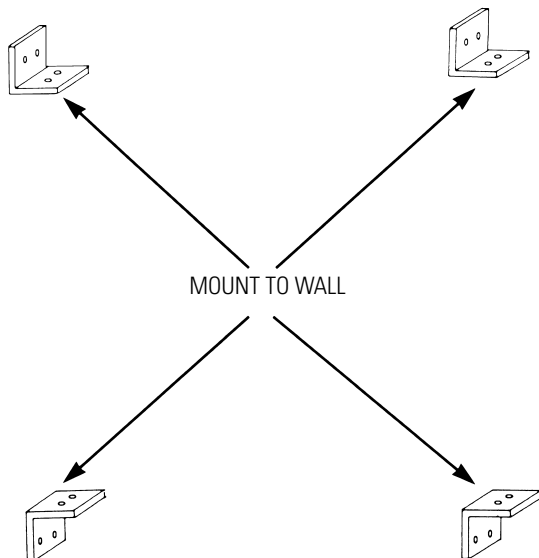


FIGURE 3. BRACKETS

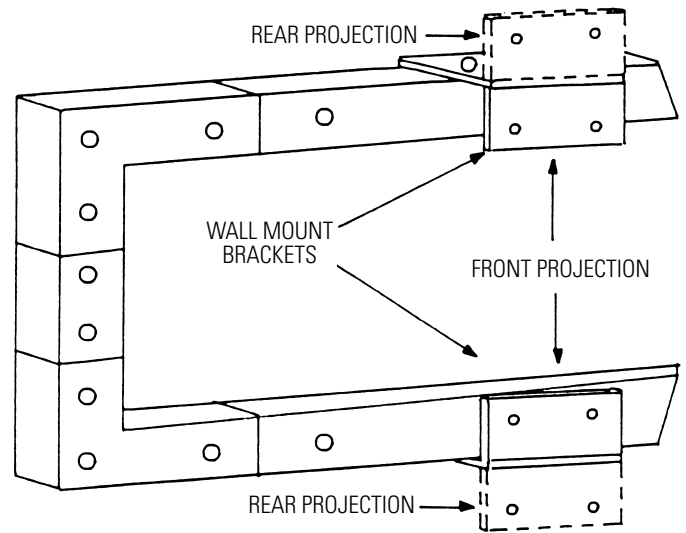


FIGURE 2. FRAME REAR VIEW

5. Unroll the screen surface on a clean surface, DO NOT USE NEWSPAPER. The viewing side of the surface is rolled to the inside of the roll. Place the frame over the screen surface, and while lifting the frame with one hand, snap the screen surface onto the frame with the other hand while maintaining a steady pull on the surface.
6. Position the screen frame with the mounted surface into the mounting brackets and secure the frame to the mounting brackets with black sheet metal screws.
7. Your assembled and mounted screen should appear as shown in a side view in figure 4. Any questions or comments should be directed to the factory at 219/267-8101.

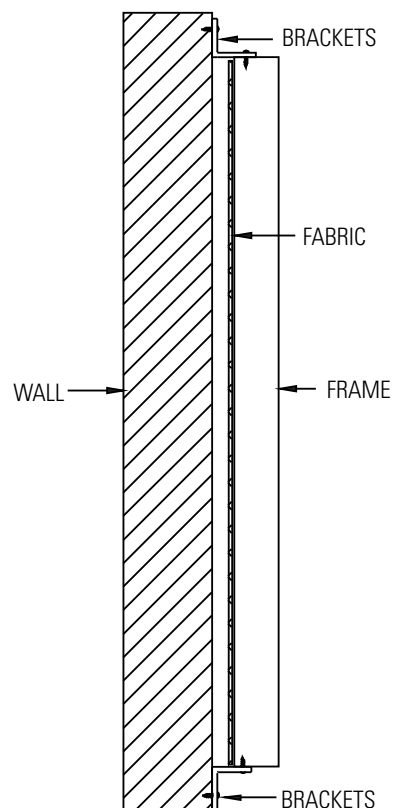


FIGURE 4. MOUNTED