



ADVANTAGE MANUAL with CSR

CONTROLLED SCREEN RETURN

DA-LITE SCREEN COMPANY, INC.
 3100 North Detroit Street
 Post Office Box 137
 Warsaw, Indiana 46581-0137
 Phone: 219/267-8101
 800-622-3737
 Fax: 219/267-7804
 http://www.da-lite.com
 e-mail: info@da-lite.com

SPECIFICATION DATA

SUGGESTED SPECIFICATIONS: _____ projection screen(s), _____ (H) x _____ (W), recessed ceiling mounting type. To have Glass Beaded, Matte White, Video Spectra® 1.5 or High Power surface with black masking borders standard on flame retardant and mildew resistant fabric, mounted on 3" diameter ball bearing rigid steel spring roller. To be equipped with Controlled Screen Return (CSR) to control the return speed of the screen surface back into the case. Fabric to be permanently attached to roller by metal clips on fabric edge being forced into groove in roller. There shall be a clip every 3" along the fabric edge and double clips shall be used on the ends. Top, front, and back of case to be made of extruded aluminum. End caps to be of heavy gauge steel with provisions for attaching mounting hardware. Bottom of case to have a removable access door. Entire case to be painted white. Bottom of case to be self-trimming, with a built-in flange around the bottom of the case. Bottom of screen shall be formed into pocket holding tubular metal slat. An extruded aluminum saddle with zinc plated steel pull shall be attached to the slat by four screws on each end. Heavy-duty plastic caps shall protect the ends of the slat. Metal bumper stops, padded with sponge rubber, shall be built into the case to prevent slat wedging inside case. Roller mounting brackets to be adjustable to allow centering or offsetting the screen within the case.

Matte White: Horizontal seams required when both dimensions exceed 10 feet.

Glass Beaded: Horizontal seams required when both dimensions exceed 8 feet.

Video Spectra® 1.5: Available in sizes where both dimensions do not exceed 8 feet.

High Power: Available in sizes up to and including 9 feet by 12 feet. Horizontal seams required when both dimensions exceed 6 feet.

DIMENSIONS

Sizes		*Overall Length of Case		Approx. Ship. Wt.	
H x W	Cm	In.	Cm	Lbs.	Kg
60" x 60"	152 x 152	65-1/2"	166	60	27.22
70" x 70"	178 x 178	75-1/2"	192	66	29.94
84" x 84"	213 x 213	89-1/2"	227	75	34.02
6' x 8'	183 x 244	101-1/2"	258	78	35.38
8' x 8'	244 x 244	101-1/2"	258	82	37.20
7' x 9'	213 x 274	113-1/2"	288	86	39.00
9' x 9'	274 x 274	113-1/2"	288	93	42.18
8' x 10'	244 x 305	125-1/2"	319	101	45.81
10' x 10'	305 x 305	125-1/2"	319	105	47.63
9' x 12'	274 x 366	149-1/2"	380	108	49.00
12' x 12'	366 x 366	149-1/2"	380	123	55.79

VIDEO FORMAT DIMENSIONS

Viewing Area		Nominal Diagonal		*Overall Length of Case		Approx. Ship. Wt.	
H x W	Cm	In.	Cm	In.	Cm	Lbs.	Kg
43" x 57"	109 x 145	72"	183	65-1/2"	166	59	26.76
50" x 67"	127 x 170	84"	213	75-1/2"	192	63	28.58
57" x 77"	145 x 196	96"	244	89-1/2"	227	66	29.94
60" x 80"	152 x 203	100"	254	89-1/2"	227	71	32.20
69" x 92"	175 x 234	120"	305	101-1/2"	258	83	37.65
87" x 116"	221 x 295	150"	381	125-1/2"	319	100	45.36
105" x 140"	267 x 356	180"	457	149-1/2"	380	110	49.90
120" x 160"	305 x 406	200"	508	169-1/2"	430	127	57.61

HDTV FORMAT DIMENSIONS

Viewing Area		Nominal Diagonal		*Overall Length of Case		Approx. Ship. Wt.	
H x W	Cm	In.	Cm	In.	Cm	Lbs.	Kg
45" x 80"	114 x 203	92"	234	89-1/2"	227	68	30.84
52" x 92"	132 x 234	106"	269	101-1/2"	258	77	34.93
58" x 104"	147 x 264	119"	302	113-1/2"	288	89	40.37
65" x 116"	165 x 295	133"	338	125-1/2"	319	101	45.81
78" x 139"	198 x 353	159"	404	149-1/2"	380	119	53.98

* Add 1-3/4" to overall length of case for mounting brackets.

ALL SIZES: Case width 7-3/4" (including brackets), case height 6-3/8".

Overall case length dimensions ± 1/4".

Detail dimensional drawings and installation instructions available upon request.

Specifications subject to change without notice.

NOTE: Letterbox formats available upon request.

WHEN ORDERING, MAKE APPROPRIATE SELECTIONS:

Select size from charts above.

Select viewing surface:

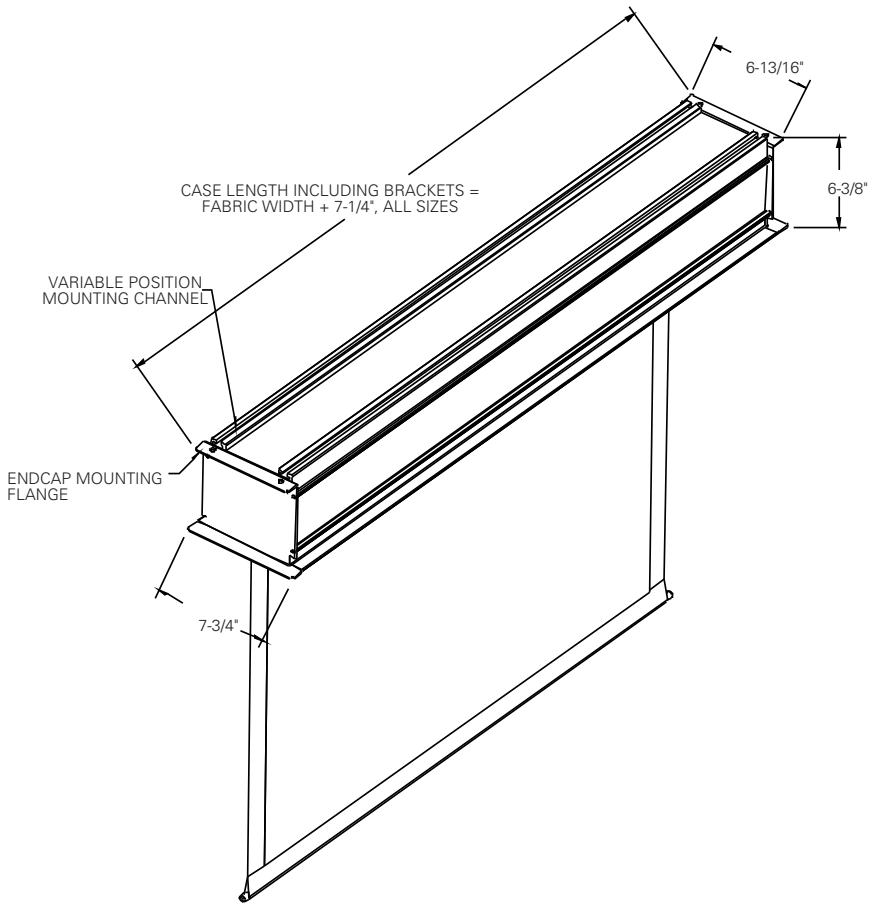
- Matte White Video Spectra® 1.5
 Glass Beaded High Power

Optional Accessories:

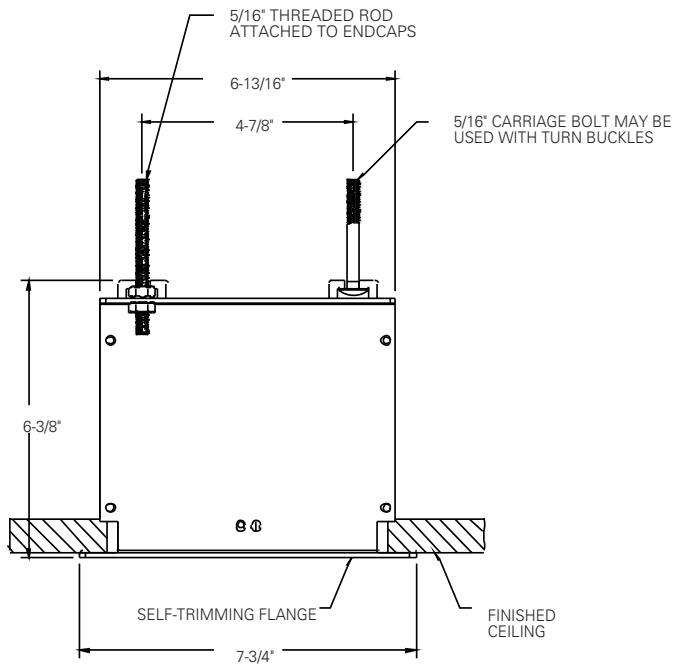
- Black "Extra Drop" to lower picture area more than normal. Maximum total drop 13' including picture area.
 White "Extra Drop" to lower picture area more than normal. Maximum total drop 13' including picture area.
 No Borders (Black masking borders standard).
 Pull Rod.

Project:	_____
Architect:	_____
Phone:	_____
Contractor:	_____
Phone:	_____
Supervisor:	_____
Phone:	_____
Supplier:	_____
Date:	_____
Revised:	_____

SUGGESTED METHODS OF INSTALLATION



METHOD A



METHOD B

